



GEOGRAPHY

Paper 1 Core Physical Geography

May/June 2025

1 hour 30 minutes

- This insert contains all the resources referred to in the questions.
- You may annotate this insert and use the blank spaces for planning. **Do not write your answers** on the insert.



DC (DE/FC) 352041/2
© UCLES 2025

[Turn over

Fig. 1.1 and Fig. 1.2 for Question 1

Depth of groundwater in southern India, May 2019 and January 2020

Fig. 1.1

May 2019

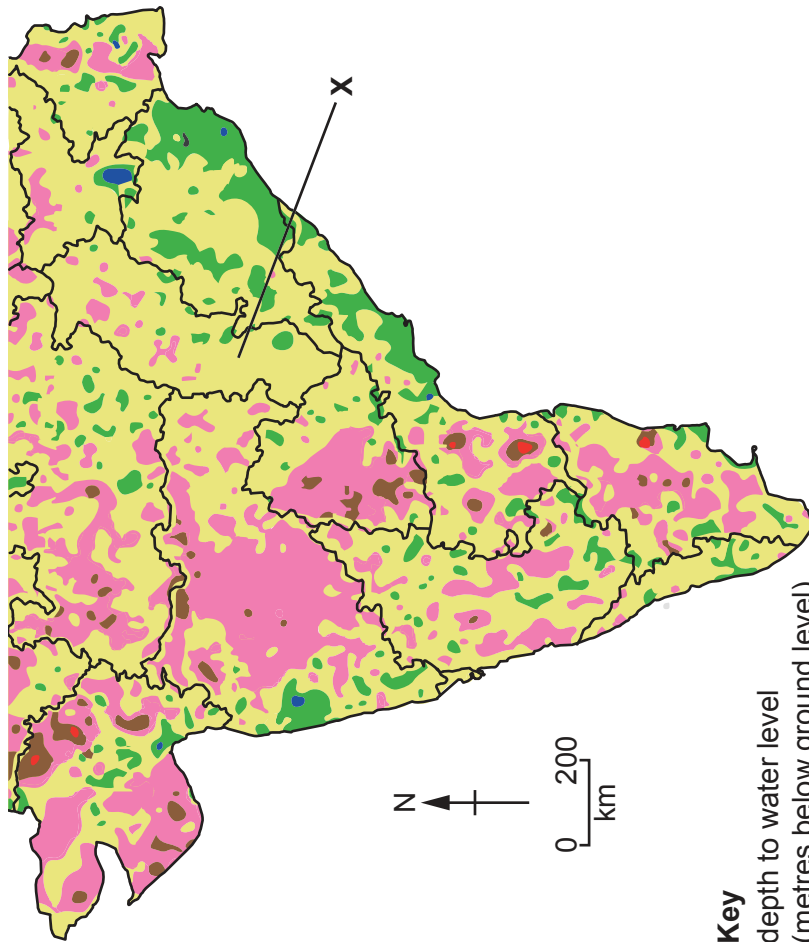
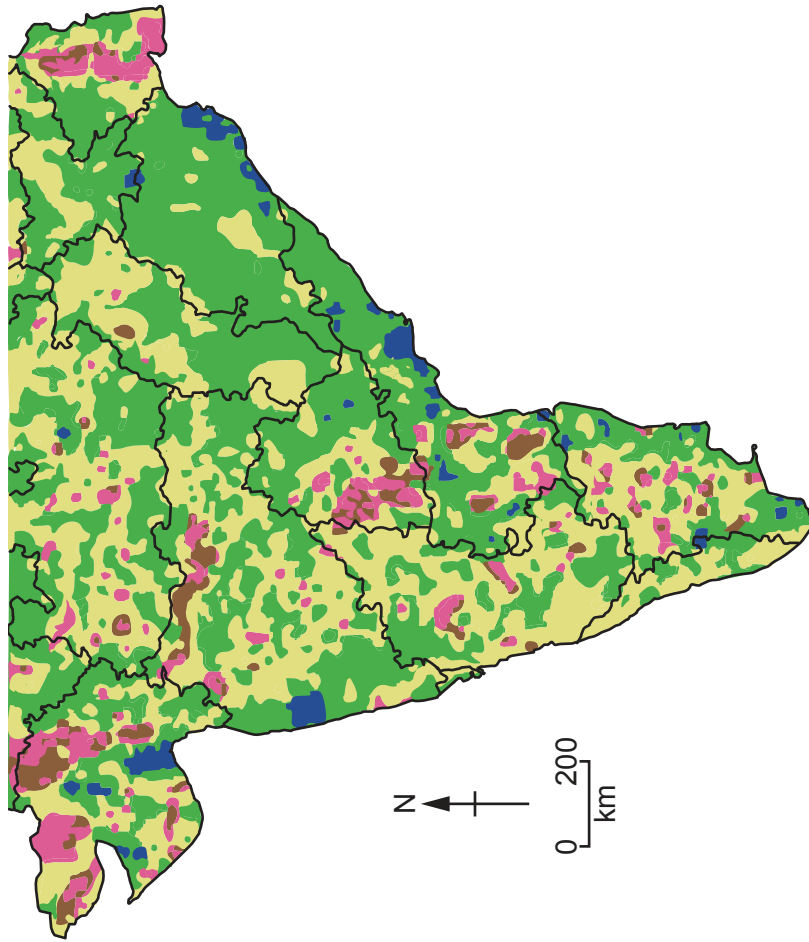


Fig. 1.2

January 2020



Key
depth to water level
(metres below ground level)

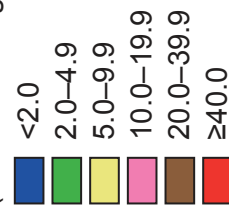
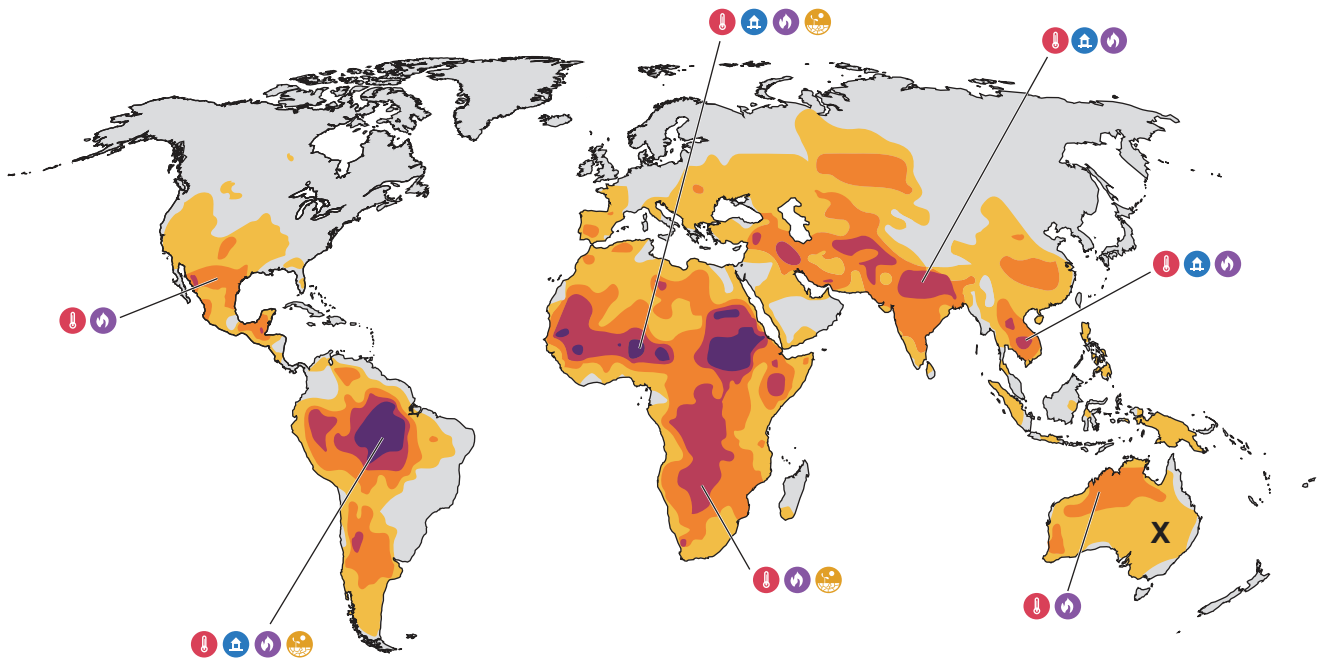


Fig. 2.1 for Question 2

Areas of greatest concern from climate-related impacts of global warming*



* Areas of greatest concern for experiencing climate-related impacts at 4°C global warming relative to pre-industrial levels (1850–1900).

Key

climate-related impact

- extreme heat stress risk
- river flooding
- fire weather risk
- drought

number of climate-related impacts

- 4
- 3
- 2
- 1
- 0

Fig. 3.1 for Question 3

A type of weathering on a brick pavement

The boundaries and names shown, the designations used and the presentation of material on any maps contained in this question paper/insert do not imply official endorsement or acceptance by Cambridge Assessment International Education concerning the legal status of any country, territory, or area or any of its authorities, or of the delimitation of its frontiers or boundaries.

Permission to reproduce items where third-party owned material protected by copyright is included has been sought and cleared where possible. Every reasonable effort has been made by the publisher (UCLES) to trace copyright holders, but if any items requiring clearance have unwittingly been included, the publisher will be pleased to make amends at the earliest possible opportunity.

To avoid the issue of disclosure of answer-related information to candidates, all copyright acknowledgements are reproduced online in the Cambridge Assessment International Education Copyright Acknowledgements Booklet. This is produced for each series of examinations and is freely available to download at www.cambridgeinternational.org after the live examination series.

Cambridge Assessment International Education is part of Cambridge Assessment. Cambridge Assessment is the brand name of the University of Cambridge Local Examinations Syndicate (UCLES), which is a department of the University of Cambridge.